

Safety Talk: Aerial Lifts

Background Info

This talk can be used by construction supervisors to explain to workers the dangers of aerial lifts and how to use them correctly. For more information see:

OSHA Requirements

- Only authorized persons and trained employees shall operate an aerial lift.
 - Boom and basket load limits specified by the manufacturer shall not be exceeded.
 - Employees shall always stand firmly on the floor of the basket, and shall not sit or climb on the edge of the basket or use planks, ladders, or other devices for a work position.
 - Lift controls shall be tested each day prior to use to determine that such controls are in safe working condition.
 - Belting off to an adjacent pole, structure, or equipment while working from an aerial lift shall not be permitted.
-

Are They Dangerous?

Lifts allow workers a safe working station when performing work at heights and hard to reach locations. Unfortunately, there are fatalities and serious injuries associated with the use of aerial lifts. Causes of accidents include:

- Tip-over due to steep slope, rough or unstable terrain
 - Falls while working outside of the rail
 - Falls when struck by vehicles or objects
 - Falls when lift suddenly jerks
 - Tip-over due to boom collapse
 - Electrocution when contacting overhead power lines
 - Crushed or caught between work platform/ bucket edge and an object
-

Basic Safety Rules

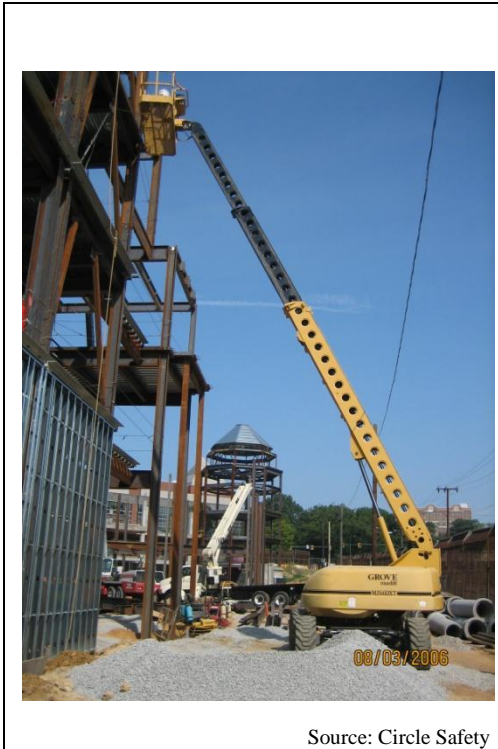
Here is a list of recommended practices. Be sure to add any others required by your company.

- Insist upon being trained on operation of the lift prior to first use.
 - Do not operate lift within 10 feet of overhead power lines.
 - Check the area of work before using a lift to insure the ground is stable and suitable for the lift.
 - Use a personal fall arrest system in a lift if there are manufacturers anchor points and tie off immediately upon entering the lift.
-

Continued on next page

Safety Talk: Aerial Lifts, Continued

What's Wrong?



Source: Circle Safety



Source: Circle Safety

Yes, I Was Listening

Sign below if you can tell everyone on this worksite:

- 1) What workers should have prior to first use
- 2) Why it is important to check the work area prior to work, and
- 3) About the basic safety rules for Aerial Lifts:

This information is provided as a free of charge resource to the public to be used in conjunction with site specific safety and health practices. Circle Safety accepts no legal responsibility for the use of this material or its application in the field.