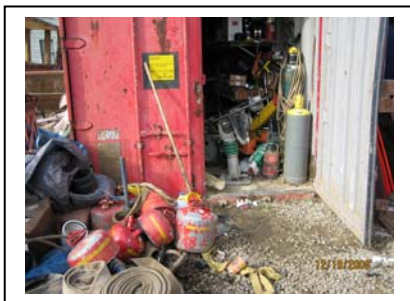


Construction Site General Reminders OSHA 29 CFR – Subpart C



Site
Organization –
this or this?



Tool
Organization –
this or this?



Emergency Info
& Equipment –
this or this?



Test yourself to see if you are following the rules of "Good Housekeeping"

- Are paths, aisles, walking & working areas kept free of clutter?
- Is temporary storage of building materials & equipment kept out of paths, aisles, walking & working areas?
- Are trash cans & dumpsters available for prompt disposal of personal & construction waste?
- Are storage trailers, gang boxes, pick-up truck beds and personal tool boxes easy to get to and kept organized?
- Are tools and equipment kept clean, organized, & ready to use?
- Are tools, especially those with sharp edges or pointed tips, stored properly when not in use?
- Are fire extinguishers within easy reach, clearly marked, inspected monthly & ready to use?
- Are First Aid kit, Bloodborne Pathogens Clean Up kit & CPR mask with medical gloves all readily available?
- Is water readily available in a cooler with individual use cups and trash disposal at hand?
- Is there a "portajohn" available for every 20 workers and with hand washing facilities?

These are all frequently cited OSHA violations!!!